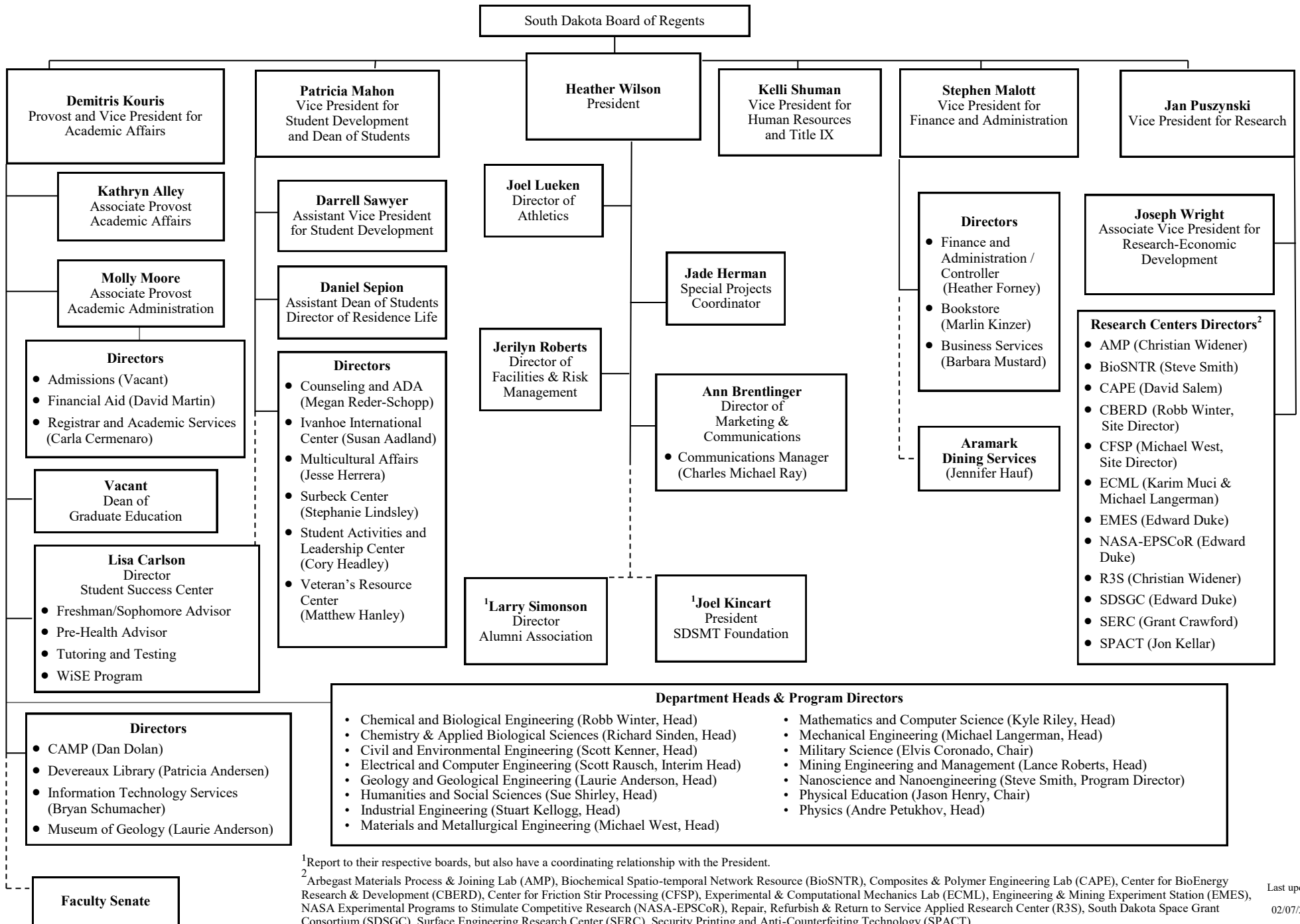


South Dakota School of Mines and Technology Organizational Chart



¹Report to their respective boards, but also have a coordinating relationship with the President.

²Arbegas Materials Process & Joining Lab (AMP), Biochemical Spatio-temporal Network Resource (BioSNTR), Composites & Polymer Engineering Lab (CAPE), Center for BioEnergy Research & Development (CBERD), Center for Friction Stir Processing (CFSP), Experimental & Computational Mechanics Lab (ECML), Engineering & Mining Experiment Station (EMES), NASA Experimental Programs to Stimulate Competitive Research (NASA-EPSCoR), Repair, Refurbish & Return to Service Applied Research Center (R3S), South Dakota Space Grant Consortium (SDSGC), Surface Engineering Research Center (SERC), Security Printing and Anti-Counterfeiting Technology (SPACT)