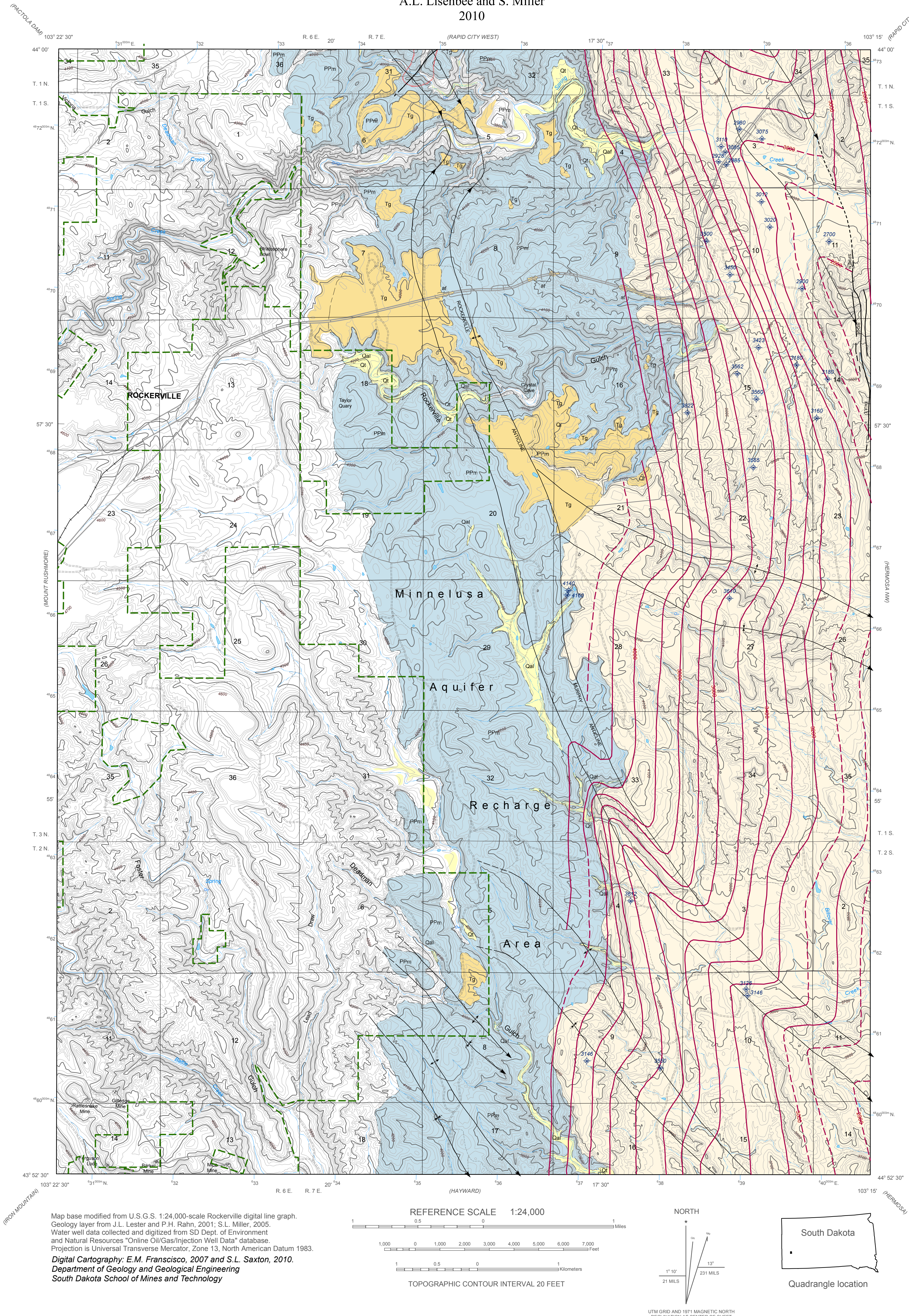


Structural Contour Map, Minnelusa Formation, Rockerville Quadrangle

By
A.L. Lisenbee and S. Miller
2010



Structural Contours

Structural contours mark lines of equal elevation of the top of a geological formation. The contours help to define unseen folds and faults present below the land surface. Dashed where projected above surface. Number indicates elevation above sea level.

Structural Contour on top of Minnelusa Formation

Structural Contour Interval 100 feet

Wells penetrating Minnelusa aquifer
Number indicates elevation of top of Minnelusa Fm, in feet

- USFS Boundary
- Trail
- Unimproved Road
- Paved Road
- Highway
- Railroad
- Lake
- Springs
- Intermittent Stream
- Perennial Stream
- Karst Features

EXPLANATION

Contact

Solid where location certain; dashed where approximately located.

Fault

Solid where location certain; dashed where approximately located; queried where uncertain. Bar and ball on downthrown side.

Anticline

Showing crestline and direction of plunge.

Solid where location certain; dashed where approximately located.

Syncline

Showing troughline and direction of plunge.

Solid where location certain; dashed where approximately located.

Monocline - Anticlinal bend

Axis located on steepest part of structure.

Solid where location certain; dashed where approximately located.

Monocline - Synclinal bend

Axis located on steepest part of structure.

Solid where location certain; dashed where approximately located.

Geologic Units

Quaternary

- Floodplain Surficial Deposits
Includes alluvium (Qal), alluvial fan deposits (Qaf) and terrace deposits (Qt). Increased potential for full saturation.
- Other Surficial Deposits
Includes landslide blocks (Ql), terrace deposits (Tg), and artificial fill (af). Decreased potential for full saturation.

Quaternary

Pennsylvanian

- Unconformity
- Minnelusa Formation - Recharge Area
Belge, white, and gray colored unit dominated carbonates and anhydrite with an upper sandstone unit.
- Minnelusa Formation Absent
- Minnelusa Formation Present in Subsurface