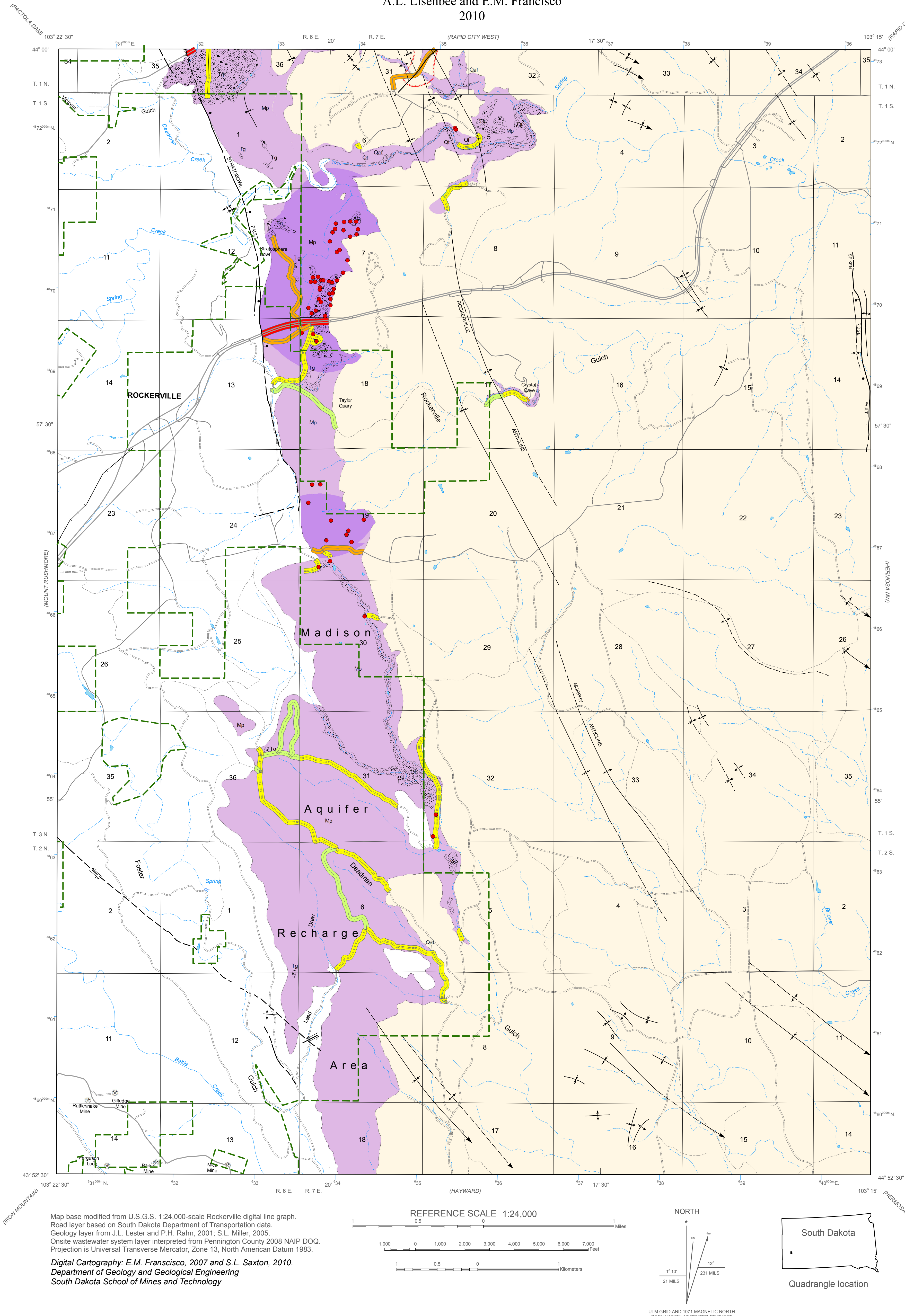


Aquifer Vulnerability Map of the Madison Aquifer (Pahasapa Limestone), Rockerville Quadrangle

By
A.L. Lisenbee and E.M. Francisco
2010



The preparation of this map was funded by the West Dakota Water Development District in association with the Department of Geology and Geological Engineering South Dakota School of Mines and Technology

Definition of Vulnerability

Aquifer vulnerability is the potential or likelihood that any contaminant could reach the ground-water supply, based on designated parameters described below.

Areas of increased aquifer vulnerability due to the presence of on-site septic systems in the Madison recharge area

Density (number of OSS per sq. mi.)	Rating
0 - 10	Low to Medium
10 - 40	Medium to High
40 - 81	High to Very High

Increased aquifer vulnerability due to the presence of roads (buffered 100 feet on either side) in the Madison recharge area.

Type of Road	Rating
Trail	Low
Dirt Road	Low to Medium
Paved Road	Medium to High
Highway	High to Very High

Trail	Railroad
Unimproved Road	Karst Features
Paved Road	Lake
Highway	Springs
Interstate	Intermittent Stream
	Perennial Stream

Geologic Units

Qt	Recharge Area Units present include alluvium (Qal), alluvial fan (Qaf) with stippled pattern and terrace deposits (Qt, Tg) with coarse stippled pattern, Pahasapa Limestone (PPm) with no pattern. Color indicates varying degree of vulnerability; see "Definition of Vulnerability".
Mp	
Qal	
	Pahasapa Limestone Present in Subsurface
	Pahasapa Limestone Absent
---	Contact Solid where location certain; dashed where approximately located