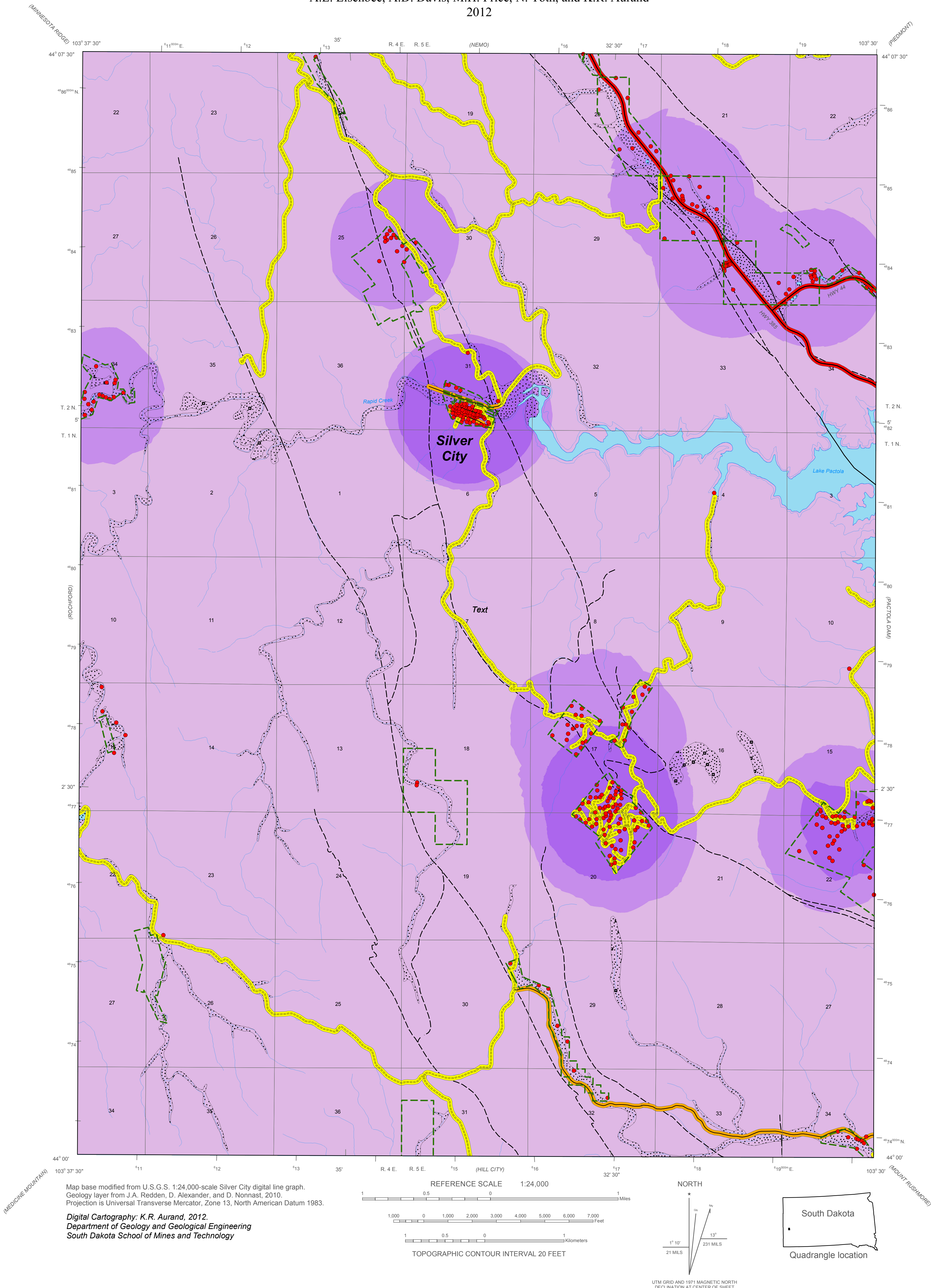


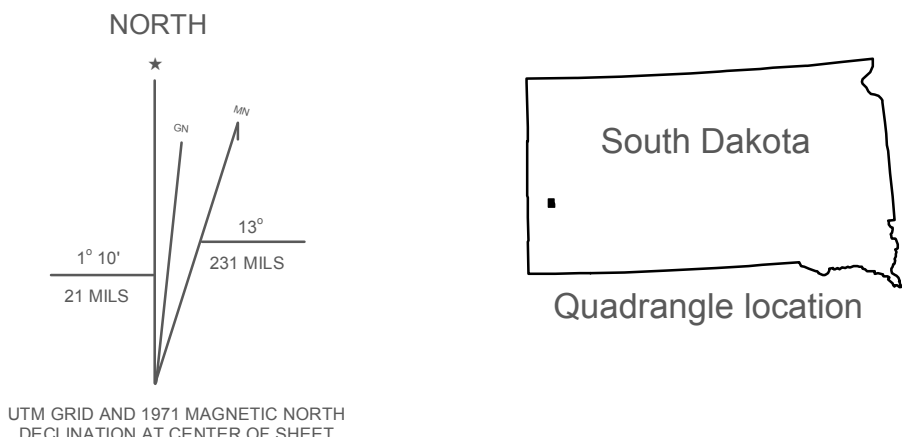
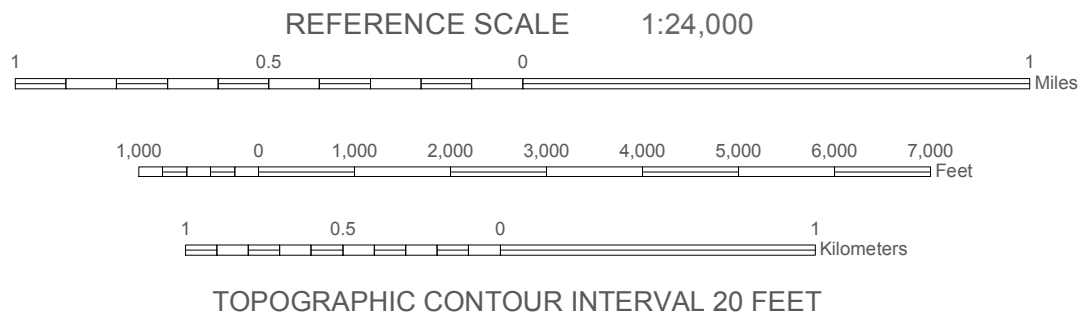
Aquifer Vulnerability Map of the Precambrian Units, Silver City Quadrangle

By
A.L. Lisenbee, A.D. Davis, M.H. Price, N. Toth, and K.R. Aurand
2012



Map base modified from U.S.G.S. 1:24,000-scale Silver City digital line graph.
Geology layer from J.A. Redden, D. Alexander, and D. Nonnast, 2010.
Projection is Universal Transverse Mercator, Zone 13, North American Datum 1983.

Digital Cartography: K.R. Aurand, 2012.
Department of Geology and Geological Engineering
South Dakota School of Mines and Technology



The preparation of this map was funded by the West Dakota Water Development District in association with the Department of Geology and Geological Engineering South Dakota School of Mines and Technology

Definition of Vulnerability

Aquifer vulnerability is the potential or likelihood that any contaminant could reach the ground-water supply, based on designated parameters described below.

Areas of increased aquifer vulnerability due to the presence of on-site wastewater disposal systems over the Precambrian crystalline aquifer.

Density (number of OSWDS per sq. mi.)	Rating
0 - 10	Low to Medium
10 - 40	Medium to High
40 - 86	High to Very High

Increased aquifer vulnerability due to the presence of road (buffered 100 feet on either side) over the Precambrian crystalline aquifer.

Type of Road	Rating
Trail	Low
Dirt Road	Low to Medium
Paved Road	Medium to High
Highway	High to Very High

EXPLANATION

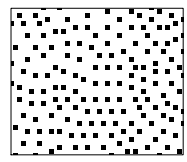
	Intermittent Stream
	Perennial Stream
	Black Hills National Forest Boundary
	Railroad
	Lake
	Springs
	On-Site Wastewater Disposal System (OSWDS)

Geologic Structure

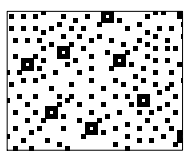
	Fault
--	-------

Fault
Solid where location certain; dashed where approximately located; queried where uncertain. Bar and ball on downthrown side.

Surficial Deposits



Floodplain Surficial Deposits
Alluvium- Loosely consolidated to unconsolidated, typically stratified, rounded to angular, poorly to well sorted, clay to boulder sized clasts. Deposited as alluvial fans, in stream valleys, and on present floodplains. Includes Qal.



Other Surficial Deposits
Terrace Deposits, Colluvium- Loosely consolidated to unconsolidated, typically stratified, poorly to well sorted, heterogeneous sand to boulder sized clasts, deposited pediments, paleochannels, and terrace fills of older floodplains. Includes Qc, Qt, Qtg, and Qtl.