

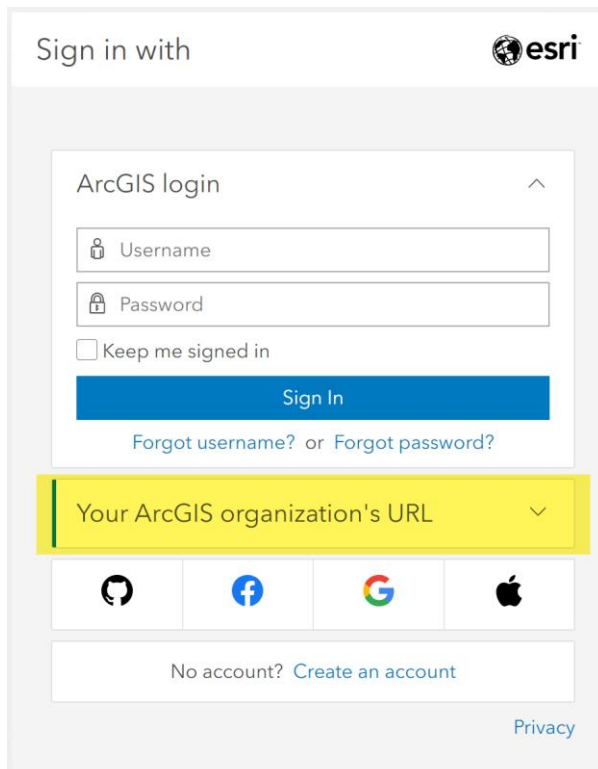
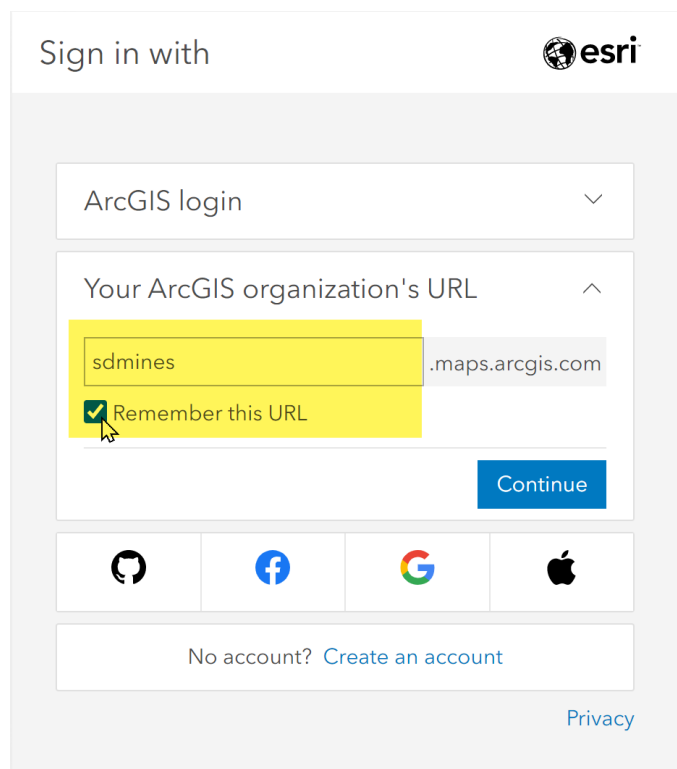
ArcGIS Online: First Time Login

This account is for SD Mines organizational accounts to access SD Mines licensed content, training, and ArcGIS Pro. (You can also set up a [separate](#) free public account using your own username or password, or other identity provider [Google, Facebook, GitHub, Apple].)

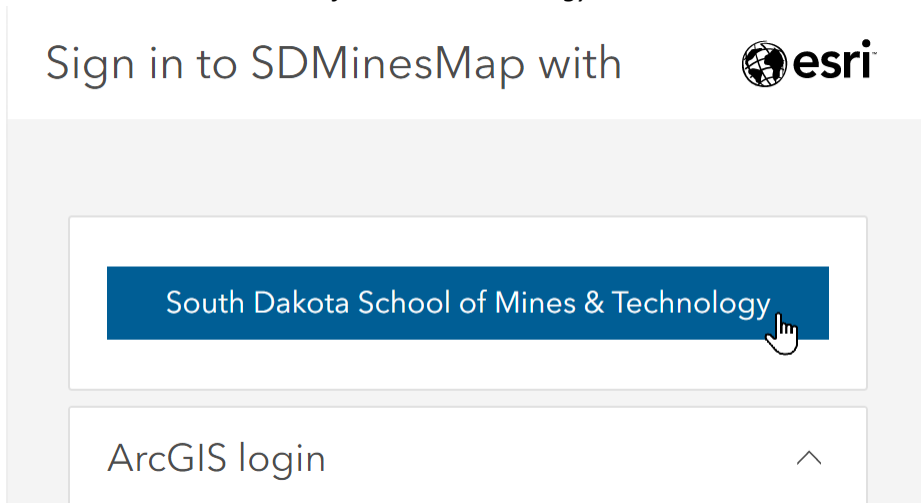
1. Open <http://arcgis.com> (Chrome or Firefox are best)
2. Click *Sign in*



3. Click: *Your ArcGIS organizations URL*, then enter in the box: **sdmines**, check *Remember this URL*, *Continue*

This image shows the first step of the ArcGIS login process. The page has a light gray background with the "esri" logo in the top right. The main heading is "Sign in with". Below this is a white box titled "ArcGIS login" with a dropdown arrow. It contains two input fields: "Username" and "Password". There is a checkbox for "Keep me signed in" and a blue "Sign In" button. Below the button are links for "Forgot username?" and "Forgot password?". At the bottom of the white box is a yellow dropdown menu labeled "Your ArcGIS organization's URL". Below the white box are four social media icons: GitHub, Facebook, Google, and Apple. At the very bottom is a link for "No account? Create an account" and a "Privacy" link.This image shows the second step of the ArcGIS login process. The page has a light gray background with the "esri" logo in the top right. The main heading is "Sign in with". Below this is a white box titled "ArcGIS login" with a dropdown arrow. Below that is a white box titled "Your ArcGIS organization's URL" with a dropdown arrow. Inside this box, the text "sdmines" is entered in the first part of the URL field, and ".maps.arcgis.com" is in the second part. A checkbox labeled "Remember this URL" is checked. A blue "Continue" button is at the bottom right of this box. Below the white box are four social media icons: GitHub, Facebook, Google, and Apple. At the very bottom is a link for "No account? Create an account" and a "Privacy" link.

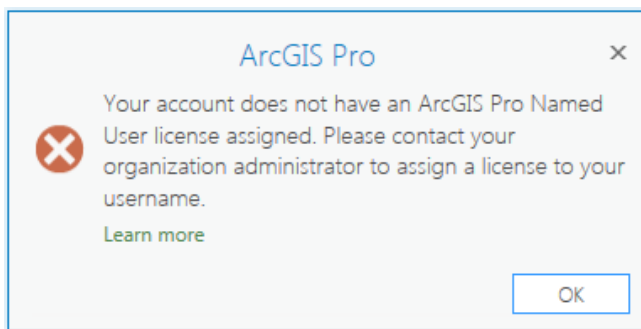
4. Click *South Dakota School of Mines & Technology*



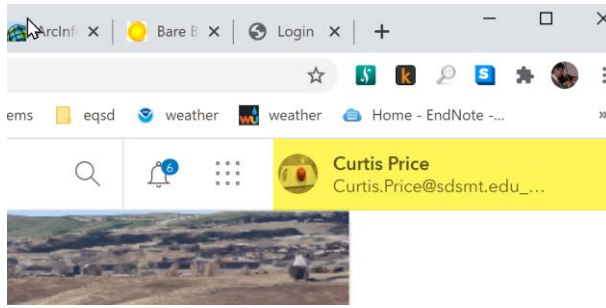
5. Login with your SD Mines email and password (your browser may do this step automatically)



If you see the message below, it means you need to request a login.
Request a login from the link at <http://sdsmt.edu/gis-support>.



6. If you are logged in, you will see your username in the upper right corner of the web page. Click on your name and click *My Profile* to change your thumbnail and add profile information.



You now are all set up with this account to accessfor ArcGIS Online, Esri Academy (www.esri.com/training), and ArcGIS Pro!

7. For more help, visit: <http://sdsmt.edu/gis-support>