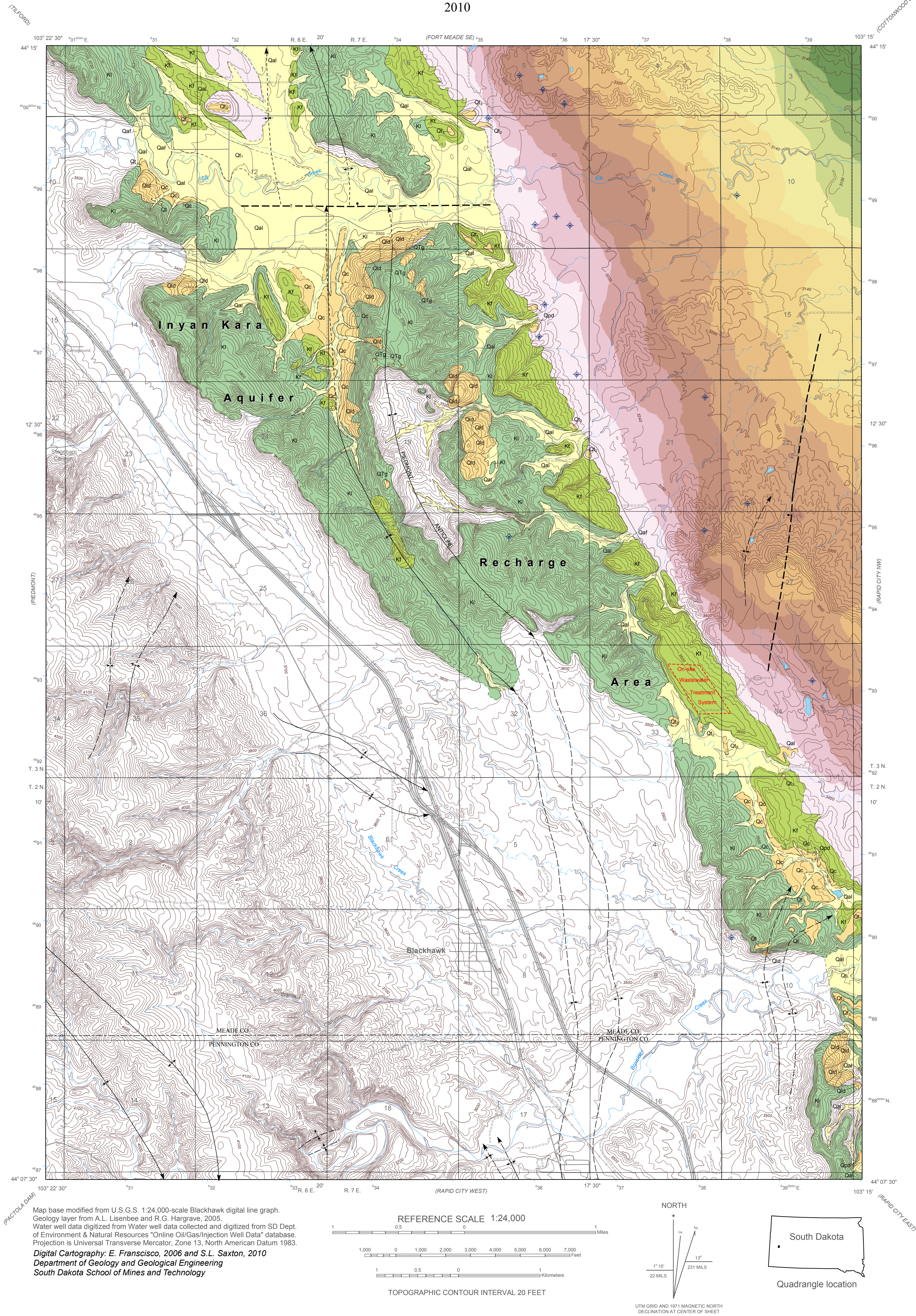


# Depth to Top of Inyan Kara Group, Blackhawk Quadrangle

By  
E.M. Francisco and A.L. Lisenbee  
2010



## Depth to Inyan Kara Aquifer In Feet below Land Surface

0 - 100	601 - 700
101 - 200	701 - 800
201 - 300	801 - 900
301 - 400	901 - 1,000
401 - 500	1,001 - 1,100
501 - 600	1,101 - 1,200

Depths are approximate; actual depths may vary by 100 feet or more.

## EXPLANATION

- Wells penetrating Inyan Kara aquifer**  
Number indicates elevation of top of Inyan Kara aquifer, in feet
- Trail
- Unimproved Road
- Paved Road
- Highway
- Interstate
- Railroad
- Lake
- Intermittent Stream
- Perennial Stream

- Contact**  
Solid where location certain; dashed where approximately located
- Fault**  
Solid where location certain; dashed where approximately located; queried where uncertain. Bar and ball on downthrown side
- Anticline**  
Showing crestline and direction of plunge. Solid where location certain; dashed where approximately located
- Syncline**  
Showing troughline and direction of plunge. Solid where location certain; dashed where approximately located
- Monocline - Anticlinal bend**  
Axis located on steepest part of structure. Solid where location certain; dashed where approximately located
- Monocline - Synclinal bend**  
Axis located on steepest part of structure. Solid where location certain; dashed where approximately located

## Geologic Units

### Quaternary

- Floodplain Surficial Deposits**  
Includes alluvium (Qal), alluvial fan (Qaf) and terrace deposits (Qt.). Increased potential for full saturation
- Other Surficial Deposits**  
Includes colluvium (Qc), landslide (Qld), pediment (Qpd) and terrace deposits (Qt, Qt., Qt., Qtg). Decreased potential for full saturation

### Lower Cretaceous

- Fall River Formation**  
Variegated, interbedded, very fine- to fine-grained sandstone, shale, and mudstone with organic matter.
- Lakota Formation**  
Brown to white sandstone, very fine- to coarse-grained, argillaceous, carbonaceous. Sandy to silty shale.

Inyan Kara Group Absent