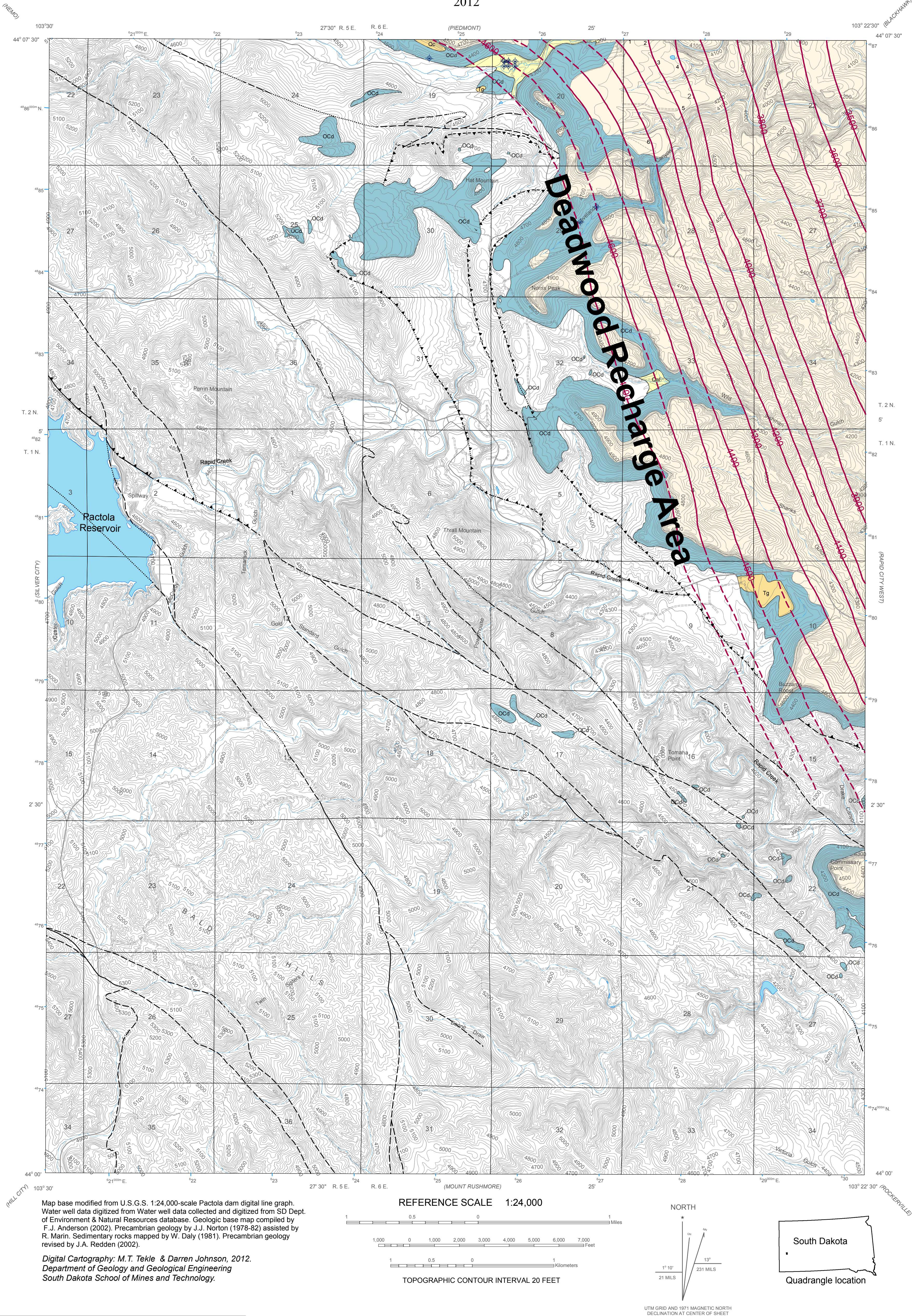


# Structural Contour Map, Top of the Deadwood Formation, Pactola Dam Quadrangle

By  
A.L. Lisenbee, A.D. Davis, M.H. Price, F. Anderson, D. Johnson and M.T. Tekle  
2012



The preparation of this map was funded by the West Dakota Water Development District in association with the Department of Geology and Geological Engineering South Dakota School of Mines and Technology.

## Structural Contours

Structural contours mark lines of equal elevation of the top of a geological formation. The contours help to define unseen folds and faults present below the land surface. Dashed where projected above surface. Number indicates elevation above sea level.

Structural Contour on top of Deadwood Formation

Structural Contour Interval 100 feet

## EXPLANATION

- Water wells penetrating Deadwood aquifer
- Trail
- Unimproved Road
- Paved Road
- Highway
- Lake
- Intermittent Stream
- Perennial Stream

- Contact
- Fault
- Thrust Fault

## Geologic Units

### Quaternary

- Qal Floodplain Surficial Deposits
- Qt Other Surficial Deposits

### Unconformity

### Ordovician

- OCd Deadwood Formation - Recharge Area

### Cambrian

- Deadwood Formation Present in Subsurface
- Deadwood Formation Absent