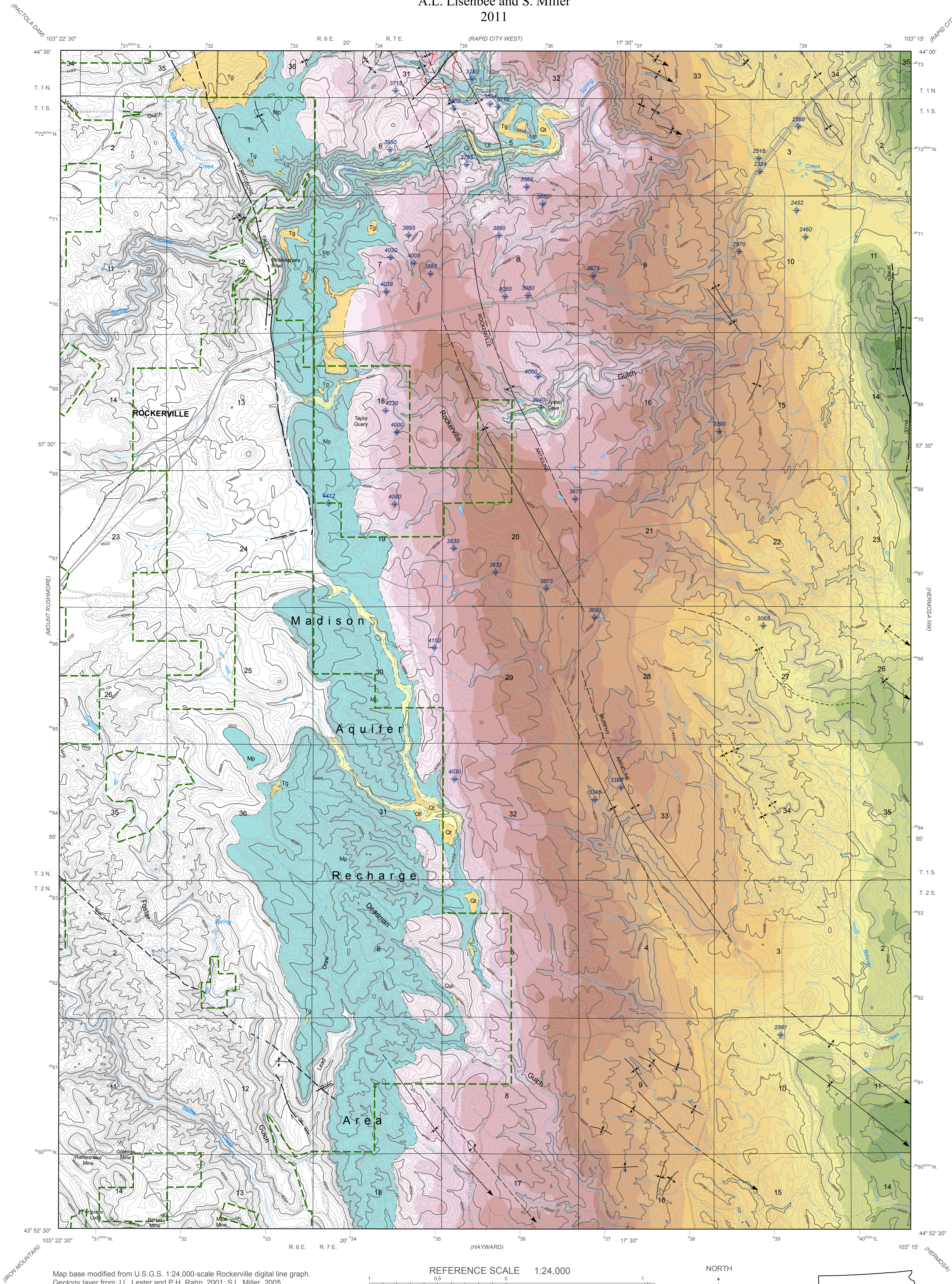
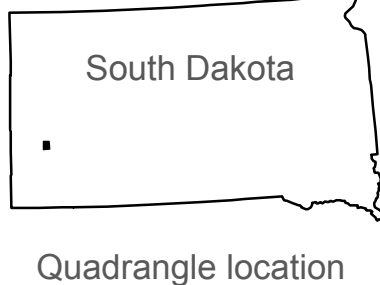
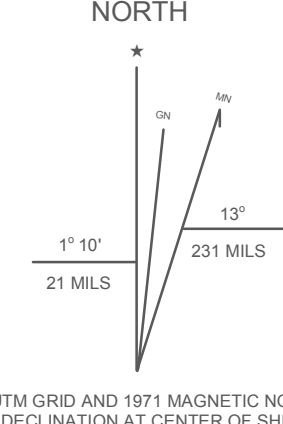
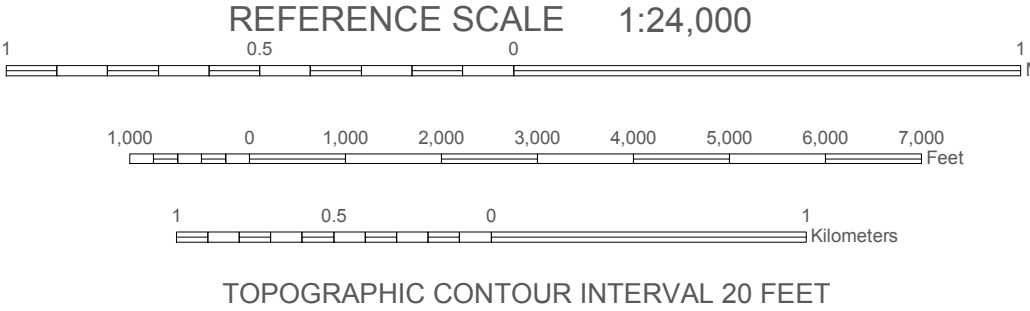


Depth to Top of Pahasapa Limestone (Madison Aquifer), Rockerville Quadrangle

By
A.L. Lisenbee and S. Miller
2011

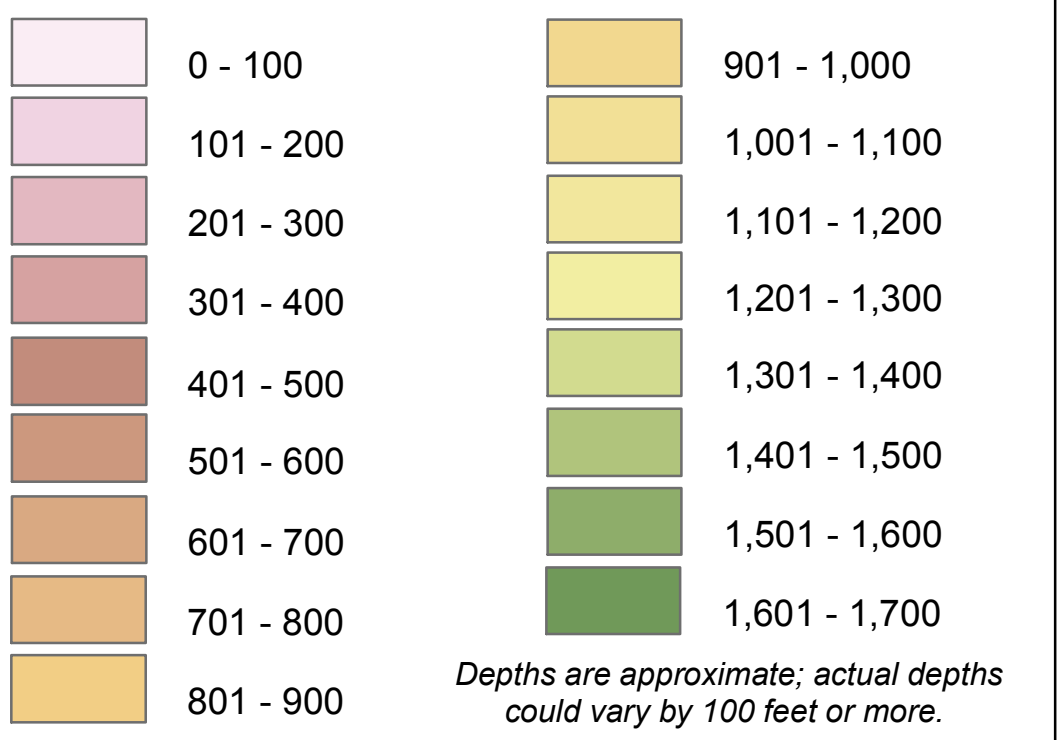


Map base modified from U.S.G.S. 1:24,000-scale Rockerville digital line graph.
Geology layer from J.L. Lester and P.H. Rahn, 2001; S.L. Miller, 2005.
Water well data digitized from Water well data collected and digitized from SD Dept. of Environment & Natural Resources "Online Oil/Gas/Injection Well Data" database.
Projection is Universal Transverse Mercator, Zone 13, North American Datum 1983.
Digital Cartography: E.M. Francisco, 2007 and S.L. Saxton, 2010.
Department of Geology and Geological Engineering
South Dakota School of Mines and Technology



The preparation of this map was financed by the West Dakota Water Development District in association with the Department of Geology and Geological Engineering South Dakota School of Mines and Technology

Depth to Pahasapa Limestone In Feet below Land Surface



EXPLANATION

3565 Wells penetrating Madison aquifer
Number indicates elevation of top of Pahasapa Fm., in feet

- USFS Boundary
- Trail
- Unimproved Road
- Paved Road
- Highway
- Railroad
- Lake
- Springs
- Intermittent Stream
- Perennial Stream
- Karst Features

- Contact
- Fault
- Anticline
- Syncline
- Monocline - Anticlinal bend
- Monocline - Synclinal bend

Geologic Units

- Quaternary
- Quaternary/Tertiary
- Lower Mississippian
- Pahasapa Limestone - Recharge Area
- Pahasapa Limestone Absent