

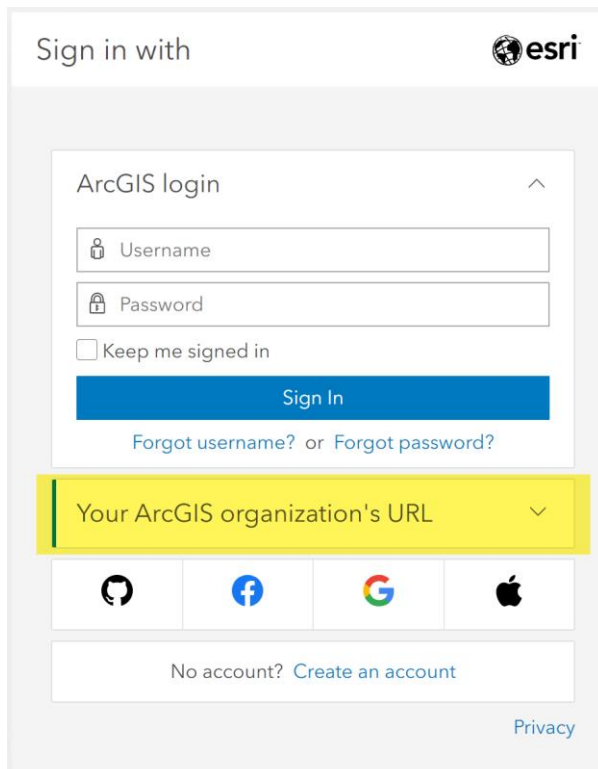
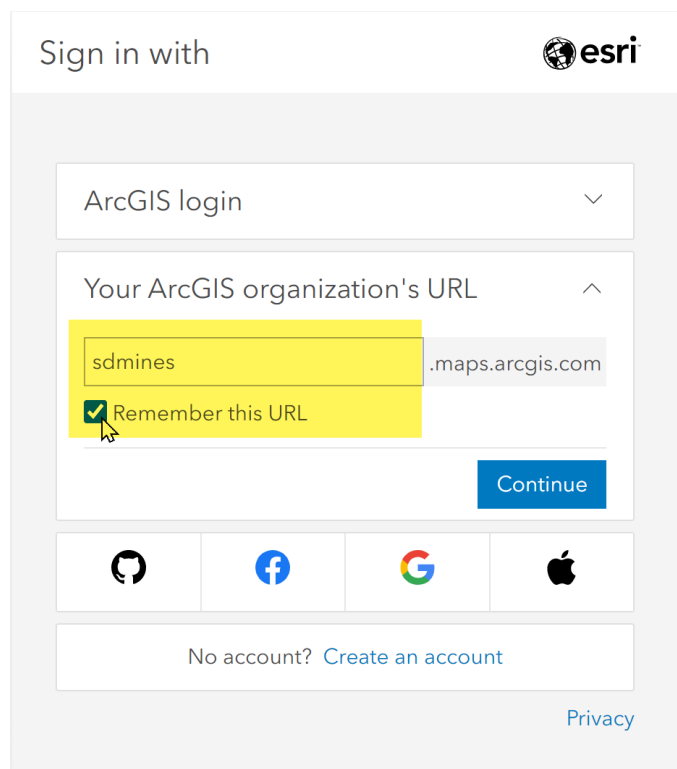
ArcGIS Online: First Time Login

This account is for SD Mines organizational accounts to access SD Mines licensed content, training, and ArcGIS Pro. (You can also set up a [separate](#) free public account using your own username or password, or other identity provider [Google, Facebook, GitHub, Apple].)

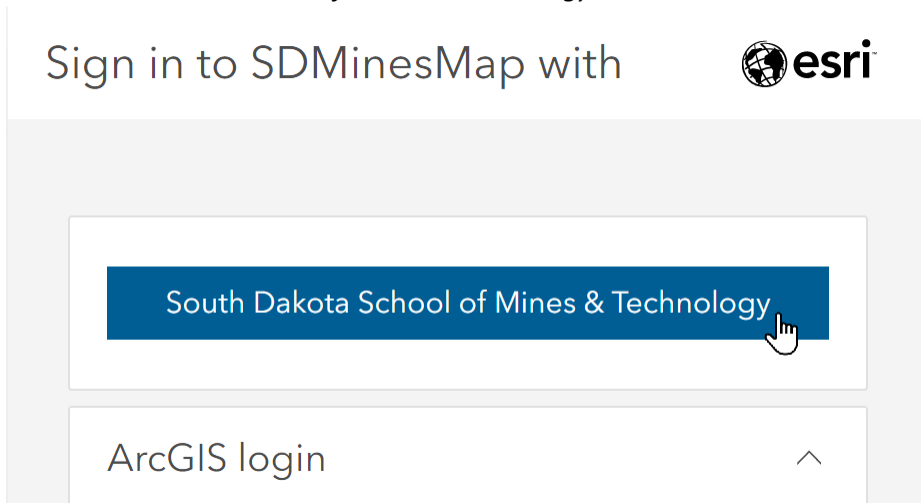
1. Open <http://arcgis.com> (Chrome or Firefox are best)
2. Click *Sign in*



3. Click: *Your ArcGIS organizations URL*, then enter in the box: **sdmines**, check *Remember this URL*, *Continue*

This screenshot shows the ArcGIS login form. At the top left, it says "Sign in with" followed by the Esri logo. Below this is a section titled "ArcGIS login" with a dropdown arrow. It contains two input fields: "Username" and "Password". There is a checkbox for "Keep me signed in" and a blue "Sign In" button. Below the button are links for "Forgot username?" and "Forgot password?". At the bottom of the form, there is a yellow highlighted dropdown menu labeled "Your ArcGIS organization's URL". Below the dropdown are four social media icons: GitHub, Facebook, Google, and Apple. At the very bottom, there is a link for "No account? Create an account" and a "Privacy" link.This screenshot shows the second step of the login process. It starts with "Sign in with" and the Esri logo. Below is a dropdown menu for "ArcGIS login". The main section is titled "Your ArcGIS organization's URL" with a dropdown arrow. It shows the text "sdmines" entered in the first part of the URL field, and ".maps.arcgis.com" in the second part. A checkbox labeled "Remember this URL" is checked. A blue "Continue" button is located to the right of the URL field. Below the form are the same four social media icons as in the previous screenshot. At the bottom, there is a link for "No account? Create an account" and a "Privacy" link.

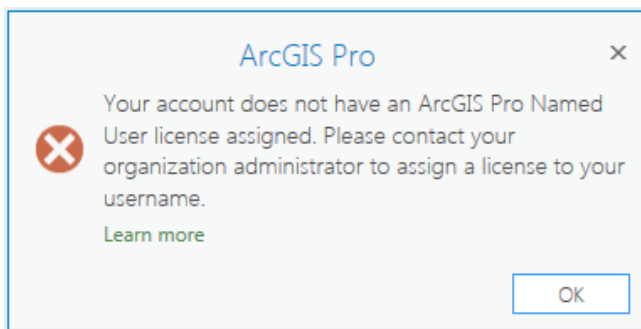
4. Click *South Dakota School of Mines & Technology*



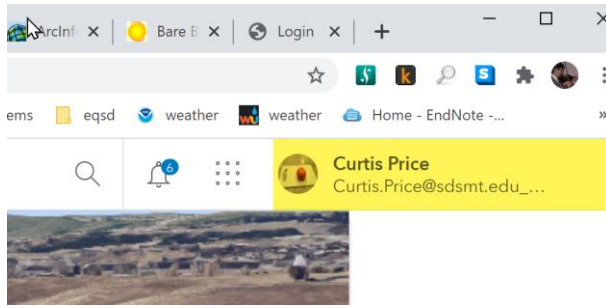
5. Login with your SD Mines email and password (your browser may do this step automatically)



If you see the message below, it means you need to request a login.
Request a login from the link at <http://sdsmt.edu/gis-support>.



6. If you are logged in, you will see your username in the upper right corner of the web page. Click on your name and click *My Profile* to change your thumbnail and add profile information.



You now are all set up with this account to accessfor ArcGIS Online, Esri Academy (www.esri.com/training), and ArcGIS Pro!

7. For more help, visit: <http://sdsmt.edu/gis-support>