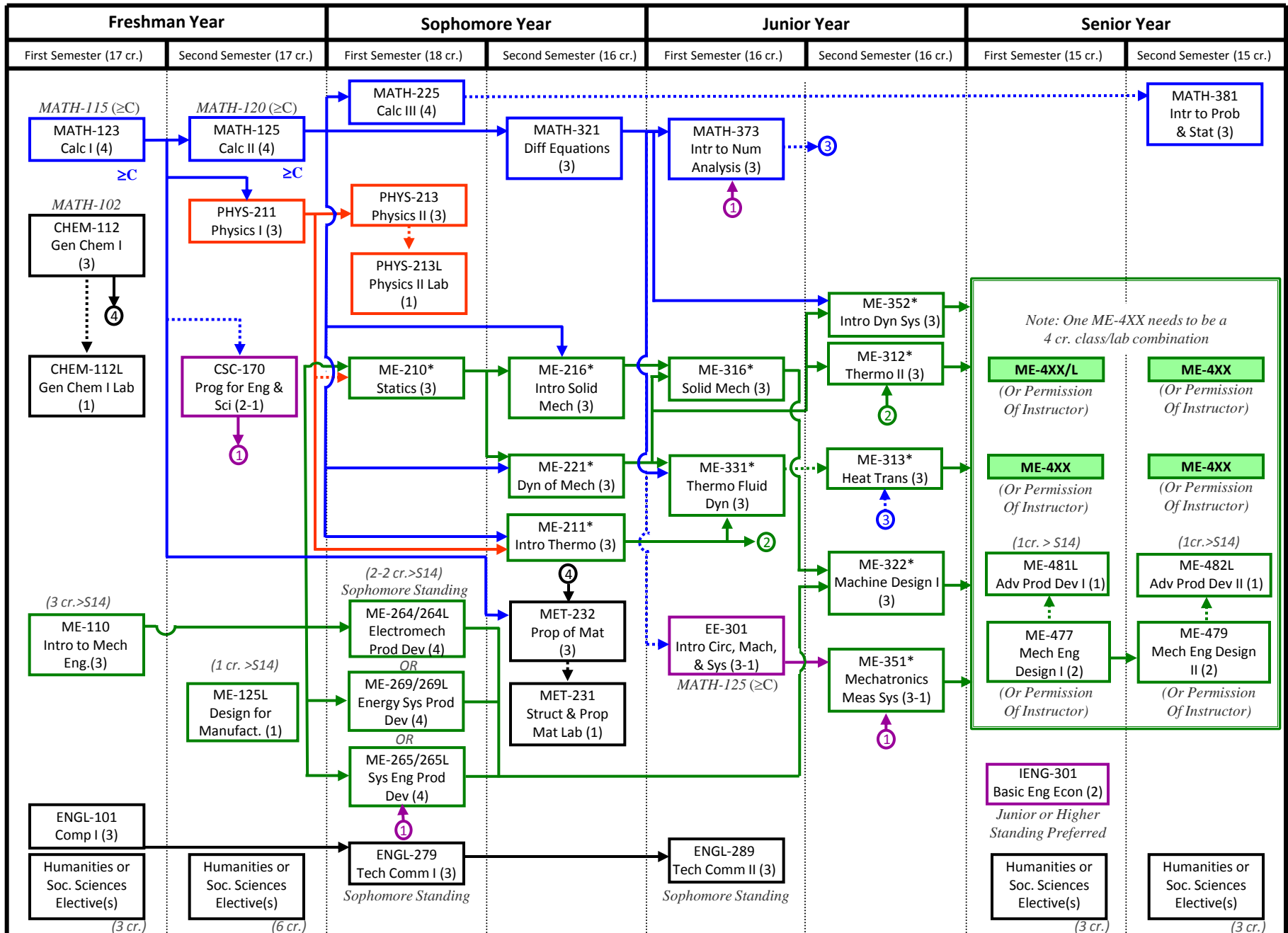


Mechanical Engineering Flow Chart (2015-2016)

Updated by Drs. Langerman and Ash 02/1/2016



*A grade of C or better required for graduation

Note: Dotted line indicates concurrent

Note: Many Mechanical Engineering courses are offered both fall and spring semesters and some are offered during the summer semester. Check with your academic advisor to find out if a course is offered in semesters other than indicated on the flowchart.