

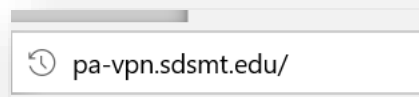


## GLOBALPROTECT VPN ON MACOS

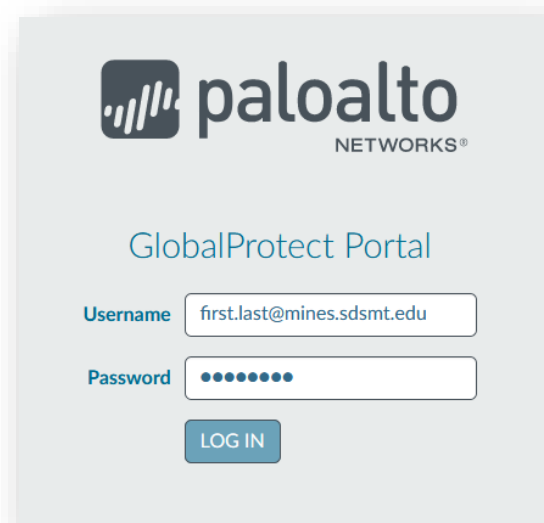
These instructions are for setting up the Palo Alto Global Protect Virtual Private Network (VPN) client on South Dakota School of Mines & Technology (SDSM&T) Apple computers. Installing and connecting the VPN will enable users to access campus resources and software licensing. These instructions are intended for SDSM&T use only.

### INSTALL PALO ALTO GLOBAL PROTECT AGENT

1. Open a web browser and go to the site <https://pa-vpn.sdsmt.edu>



2. Login with your campus email address and campus computer password. This will be the same credentials you use to login to campus computers. For students this may not be the same password as your email.



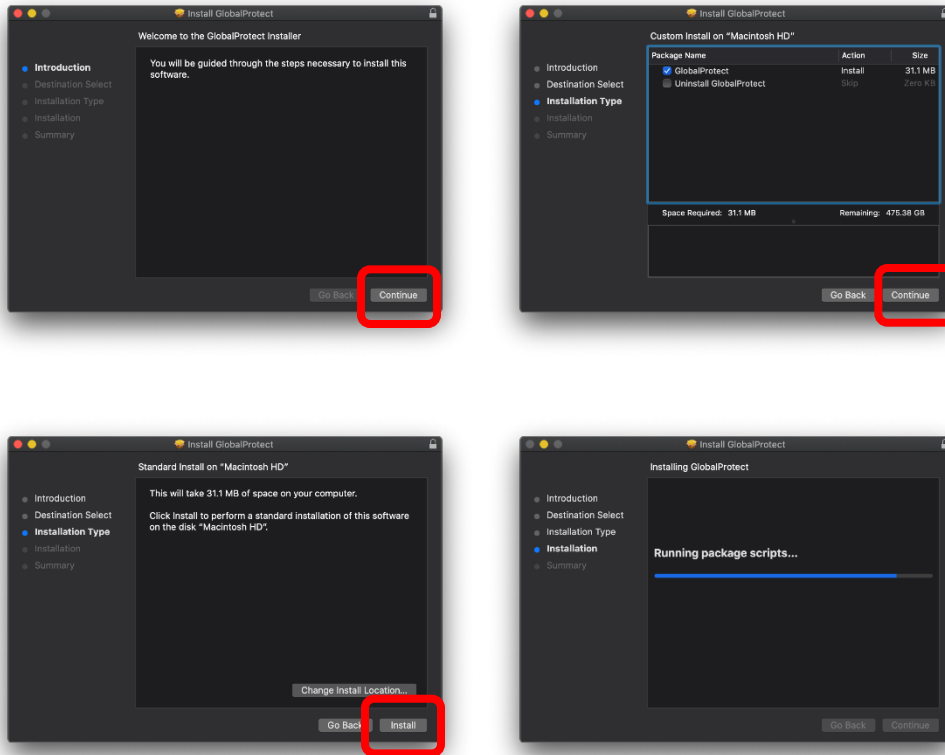
3. Download the correct version of the GlobalProtect agent. You can either choose to download the file or run it directly.



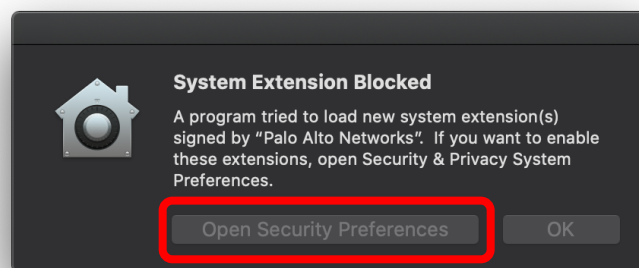
4. Run the downloaded GlobalProtect application to start the install process.



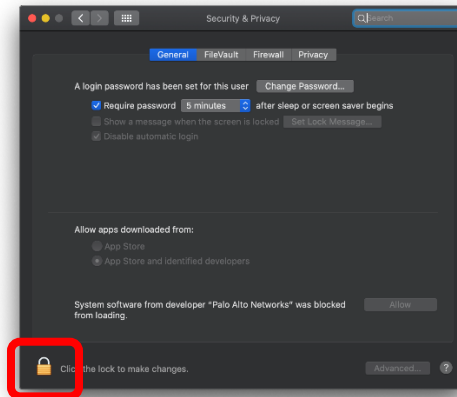
- Go through the installation process. You will be asked for the computer's administrator password



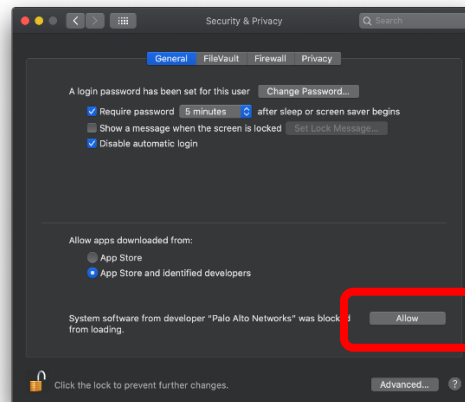
- You will probably receive a "System Extension Blocked" warning. Click the "Open Security Preferences" button. This is essential to allow the system to use VPN agent.



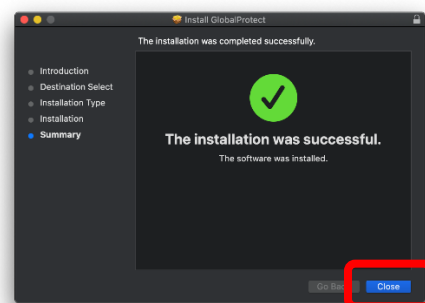
- Click the Lock icon at the bottom of the window and type the administrator password.



- Click the Allow button to give the installer permission to load



- Allow the installer to finish and click Close. Congratulations, you have installed the Palo Alto GlobalProtect agent.

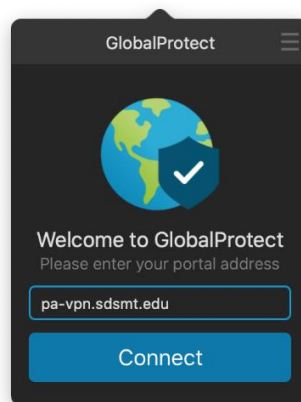


## CONNECT TO PALO ALTO GLOBAL PROTECT AGENT

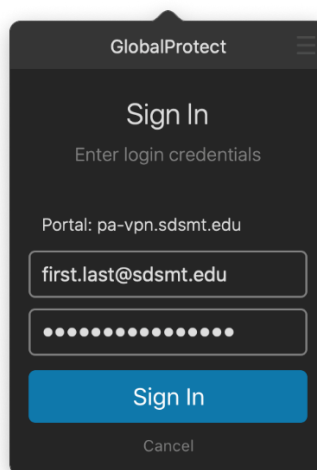
1. Click the GlobalProtect world icon in the menu bar in the top-right of the screen.



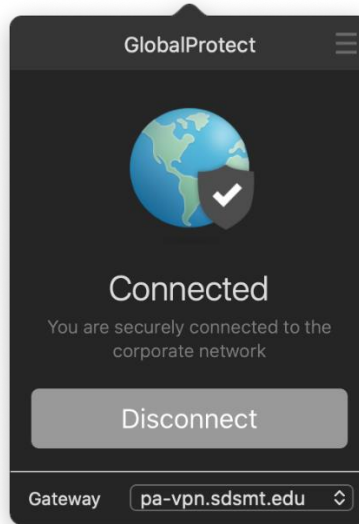
2. In the Window that appears type the portal address – [pa-vpn.sdsmt.edu](https://pa-vpn.sdsmt.edu) – and click the Connect button



3. Sign in with your student email and your campus computer password like step #2 in the above section.



4. If the credentials were entered correctly the GlobalProtect agent should show that you have successfully connected.



5. The GlobalProtect icon in your menu bar will also change indicating your computer is connected to the VPN.

