

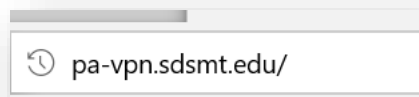


## STUDENT VPN ON WINDOWS 10

These instructions are for setting up the Palo Alto Global Protect Virtual Private Network (VPN) client on South Dakota School of Mines & Technology (SDSM&T) student personal and campus computers. Installing and connecting the VPN will enable students to access campus resources and software licensing. These instructions are intended for SDSM&T use only.

### INSTALL PALO ALTO GLOBAL PROTECT AGENT

1. Open a web browser and go to the site [pa-vpn.sdsmt.edu](http://pa-vpn.sdsmt.edu)



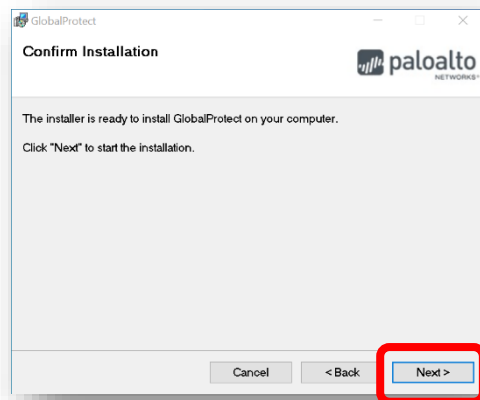
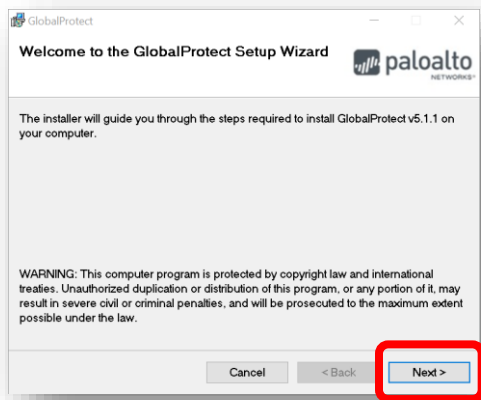
2. Login with your campus email address and campus computer password. This will be the same credentials you use to login to campus computers and may not be the same password as your student email.

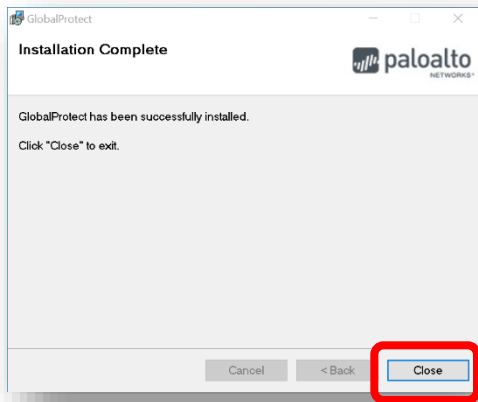
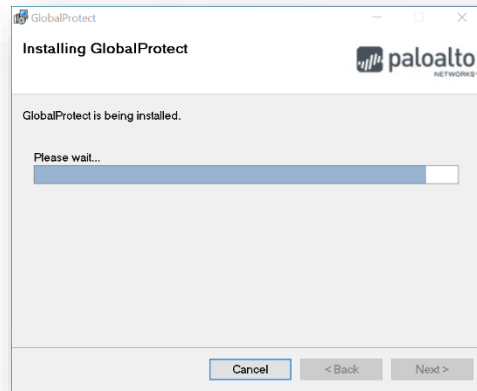
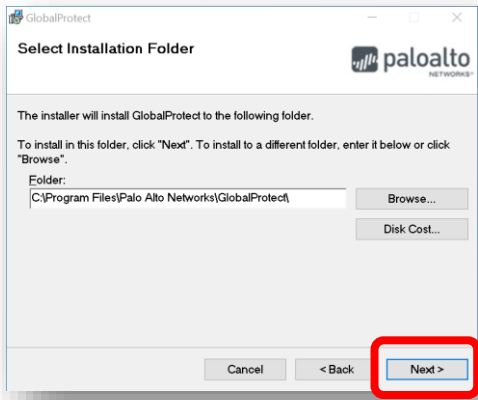


3. Download the correct version of the GlobalProtect agent. For most users this will be the Windows 64-bit version. You can either choose to download the file or run it directly.



4. Run the downloaded GlobalProtect application and go through the installation steps.

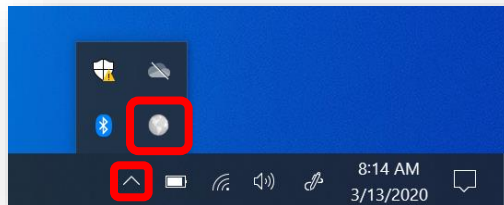




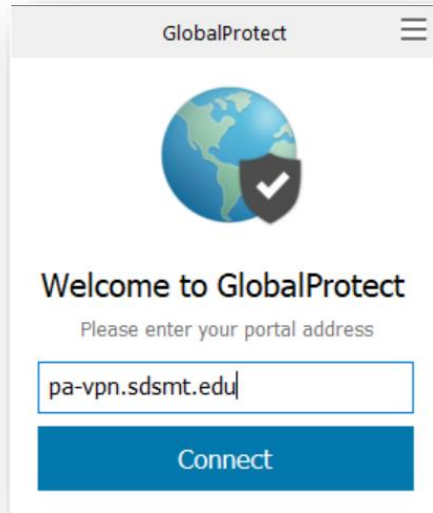
5. Congratulations, you have installed the Palo Alto GlobalProtect agent.

## CONNECT TO PALO ALTO GLOBAL PROTECT AGENT

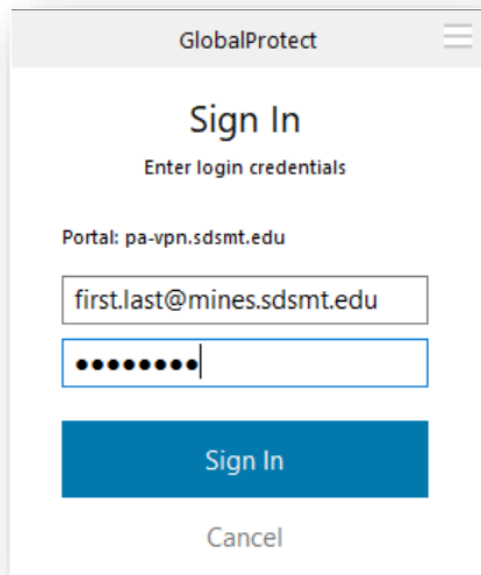
1. Click the GlobalProtect world icon in the taskbar. You may need to click the up arrow to see it



2. In the Window that appears type the portal address – [pa-vpn.sdsmt.edu](https://pa-vpn.sdsmt.edu) – and click the Connect button



3. Sign in with your student email and your campus computer password like step #2 in the above section.



4. If the credentials were entered correctly the GlobalProtect agent should show that you have successfully connected.

