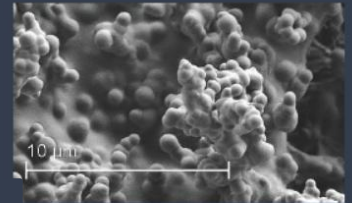


# BACK TO THE FUTURE



## 2026 Summer Research

The Back to the Future REU program is an NSF funded summer research program that provides undergraduate students the opportunity to work on research topics in Metallurgy and Materials Science many of which have historical and artistic components.

### Program Description

- Open to all majors
- 10-week summer program, May 26 – July 31
- Faculty mentored research
- \$7000 stipend and room and board included
- Workshops on historical impact of metallurgy

### Research Topics

- Archaeometallurgy
- Welding and Joining
- Advanced Alloys
- Critical Minerals
- Thin Films Research
- Biomaterials
- Corrosion Engineering

### How to apply

Visit REU Website: [met.sdsmt.edu/backtothefuture](https://met.sdsmt.edu/backtothefuture)

### Contact

Michael West, Materials and Metallurgical Engineering, South Dakota Mines

[Michael.West@sdsmt.edu](mailto:Michael.West@sdsmt.edu)